



THE STATE OF NEW HAMPSHIRE
DEPARTMENT OF TRANSPORTATION



CHRISTOPHER D. CLEMENT, SR.
COMMISSIONER



JEFF BRILLHART, P.E.
ASSISTANT COMMISSIONER

November 24, 2014

Randy Morrison
Board of Selectmen
PO Box 2
Wentworth, NH 03282

Re: NHDOT Project, Wentworth 26903, Bypassed Bridge over Baker River

Dear Mr. Morrison:

As you are aware, the NH Department of Transportation is planning the subject project, which will address the bridge that carries Wentworth Village Road over the Baker River (Bridge 148/121). The bridge, constructed in 1909, is a steel high Warren truss with a timber deck. The in-depth bridge inspection that was completed in May 2014 determined that the bridge currently has no safe live load capacity remaining when considering all anticipated loads. The subject project was set up to determine the best way to address the bridge.

Engineering studies have been initiated to refine the scope and limits of work necessary for this project. The Department's Bureau of Environment is in the process of evaluating the potential environmental impacts associated with the project. To assist in this evaluation, I am asking that you provide comments relative to the project's potential impacts on environmental, social, economic, or cultural resources, by responding to the following questions.

1. Are there any existing or proposed community or regional plans that might have a bearing on this project?
2. Are there any natural resources of significance in the vicinity of the project? (e.g. prime wetlands, floodplains, rare species, etc.)
3. Are there any cultural resources of significance in the vicinity of the project? (e.g. stonewalls, cemeteries, historical or archeological resources, etc.) *Please note that Section 106 of the National Historic Preservation Act offers those that possess a direct interest in historical resources, including town officials, Historical Societies, and Historical Commissions, an opportunity to become more involved in an advisory role during project development as "Consulting Parties." Those interested should contact the Department.*
4. Are there any public parks, recreation areas, conservation lands, or wildlife/waterfowl refuges in the vicinity of the project? Have Land & Water Conservation Funds been used in the project area?

5. Are there any locally or regionally significant water resources or related protection areas in the project vicinity? (e.g. public water supplies, wellhead protection areas, aquifer protection districts, etc.)
6. Are there any water quality concerns that should be addressed during the development of this project? (e.g. stormwater management, NPDES Phase II, impaired waters, etc.)
7. Are you aware of any existing or potential hazardous materials or contaminants in the vicinity of the project? Are there asbestos landfills or asbestos containing utility pipes located within the project limits?
8. Do you have any environmental concerns not previously noted (e.g. noise impacts, farmland conversion, etc.) that you feel the Department should be aware of for this project?
9. Will the proposed project have a significant effect upon the surrounding area? If so, please explain.
10. Are you aware of any existing roadside populations of non-native invasive plant species (such as Japanese knotweed, phragmites, or purple loosestrife) in the project area?

This letter has been sent to the Board of Selectmen; Planning Board; Fire Department; Police Department; Conservation Commission; and Historical Society.

Please feel free to contact me if you have any questions regarding the items above. Thank you for your assistance.

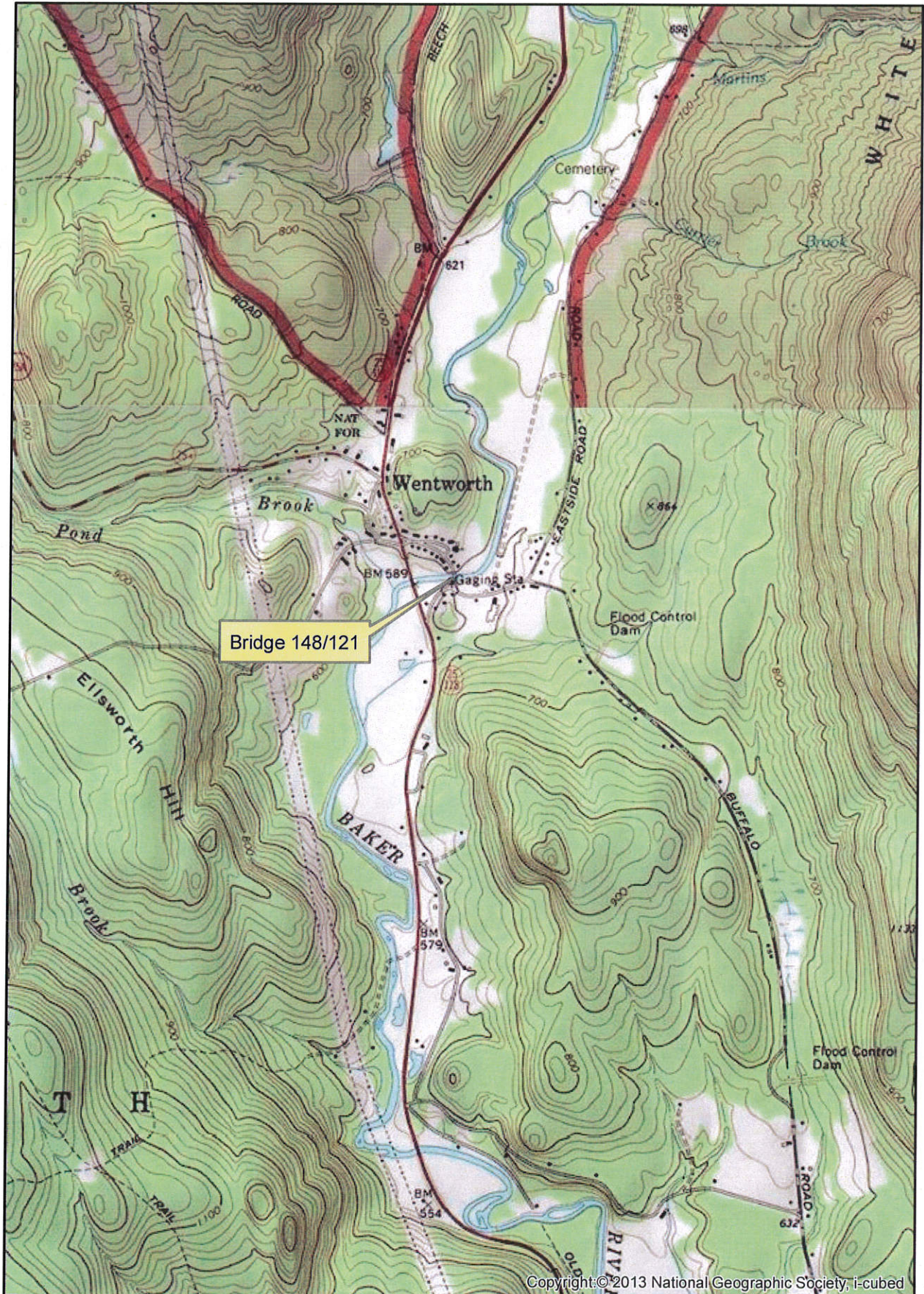
Sincerely,



Christine Perron
Senior Environmental Manager
NH Department of Transportation
Bureau of Environment
271-3226
cperron@dot.state.nh.us

CJP: cjp
Encl.

s:\environment\projects\design\26903\comm\town officials.doc



1 inch = 2,000 feet